

DRAFT

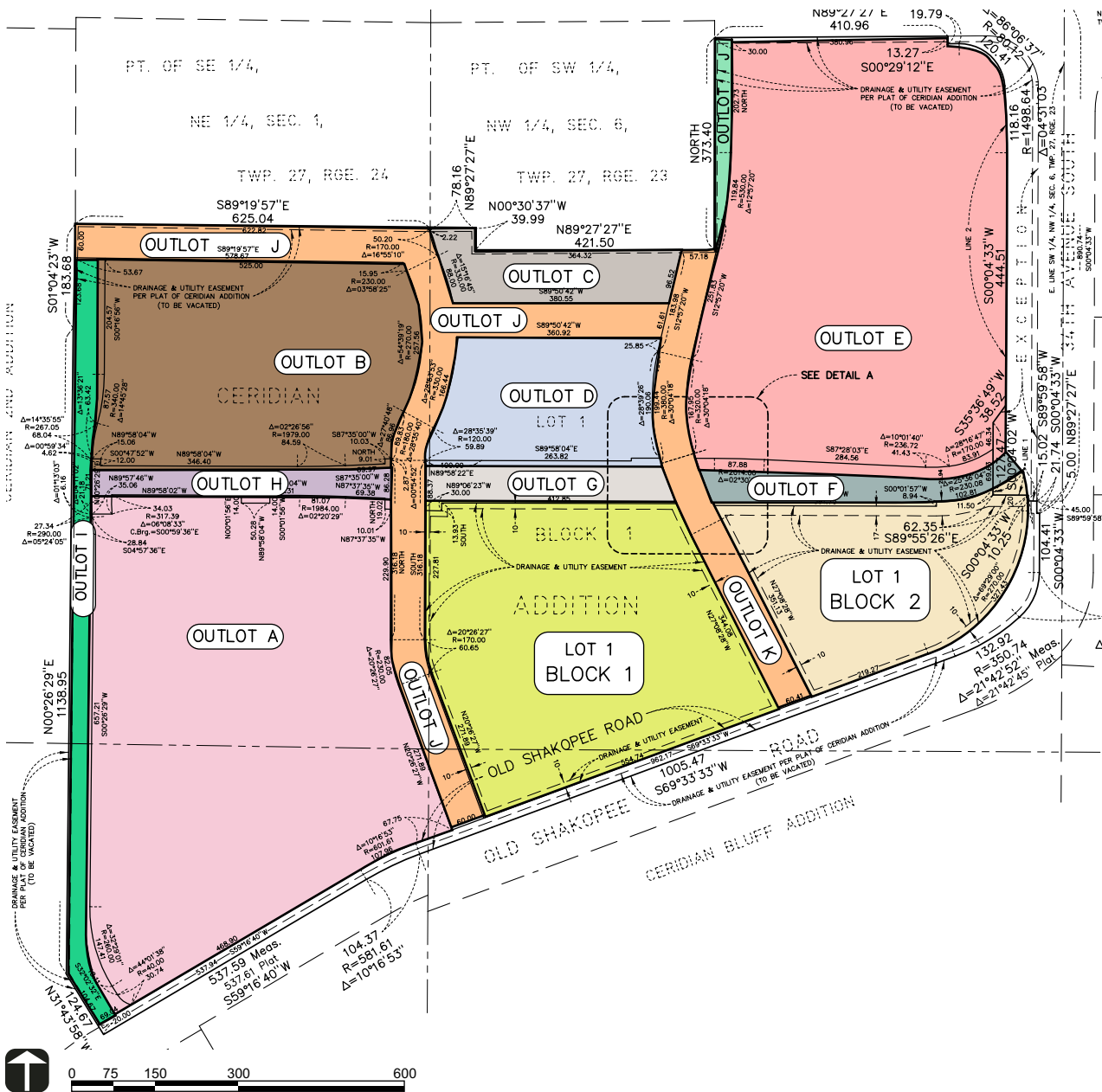


Figure 4: Plat Plan

and connects three of the Twin Cities most popular destinations: downtown Minneapolis, the Minneapolis/St. Paul International Airport, and the Mall of America in Bloomington (See Figure 5: Hiawatha LRT Line).

The Hiawatha Transit Line system has required considerable preparation and planning to

accommodate the expected land use changes around transit stops including increased densities and the new opportunities for a mixture of residential, office, retail and open space within a ½ mile of the LRT stations. The installation and construction of the rail line has been largely accepted by the Twin Cities because the area’s proactive approach to accommodating future