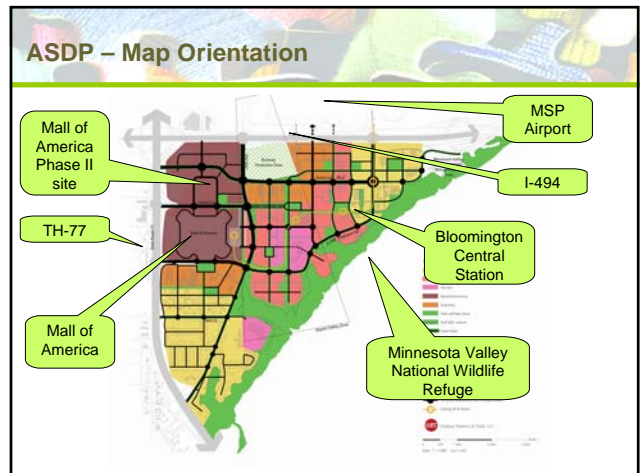
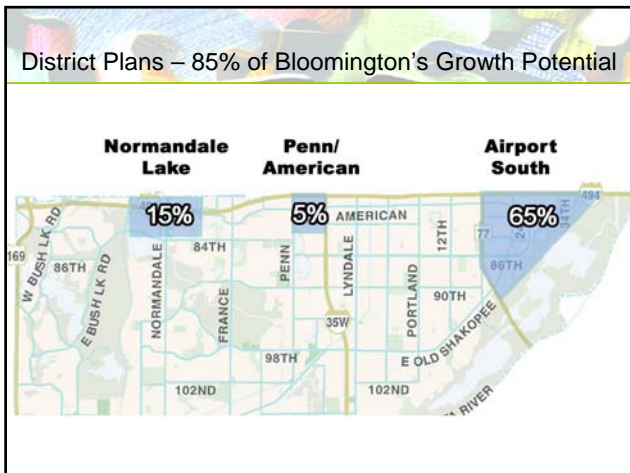




Bloomington Development Projections

	2008	2030
Employment	94,000	135,000
Households	36,800	40,500
Population	85,500	92,500

Source: Planning Division, City of Bloomington, 2008 Comprehensive Plan Update



Airport South District Plan Goals



1. Build on the District's unique mix of assets:
 - LRT and bus transit
 - MSP Airport
 - Regional freeway access
 - National Wildlife Refuge
 - Mall of America and Bloomington Central Station
 - Soft sites (under or undeveloped areas)
2. Transform the District's densities and character from suburban to urban
3. Accelerate the District's development
4. Establish and promote the District as a branded place emphasizing sustainability, quality, comfort, and safety

Airport South District Plan Objectives

1. Leverage the Hiawatha LRT and other transit modes.
2. Leverage MSP Airport's linkages.
3. Leverage the access and visibility afforded by regional highways.
4. Leverage the visual and recreational opportunities of the National Wildlife Refuge.
5. Leverage the presence of the Mall of America and integrate it into the District.
6. Establish distinct sub-districts.



Airport South District Plan Objectives

7. Establish seamless relationships with uses on airport property.
8. Preserve and enhance residential neighborhoods.
9. Subdivide blocks into walkable street dimensions.
10. Provide a hierarchy of streets (complete streets).
11. Improve connectivity within the District and across major barriers.
12. Design public spaces and streets to increase connectivity



Airport South District Plan Objectives

13. Establish a network of interconnected open spaces and corridors.
14. Create active building street frontages.
15. Reinforce a pedestrian-scaled environment.
16. Incorporate a vibrant mix of land uses (place to live, work, and play).
17. Create sustainable development and buildings through energy conservation and green infrastructure.

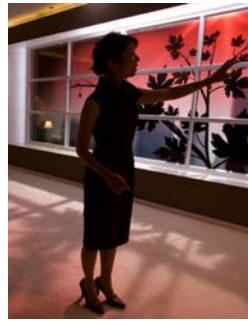


Airport South District Plan Objectives



18. Implement a shared parking strategy with on-street, surface, and structured facilities.
19. Commit resources to maintain the function and appearance of public improvements.
20. Improve the sense of comfort for residents and visitors.
21. Feature the advantages of sustainable and balanced development.
22. Preserve, restore, and enhance natural and cultural resources.

ASDP Sustainability Targets



Why Use a Sustainable Development Theme?

- Balances economic, social, and environmental concerns
- Protects environmental quality for current residents and for future generations
- Protects and enhances quality of life and public health
- Allows Bloomington to retain and enhance its long-term competitive edge
- Reduces capital costs
- Meets State and regional goals
- It's the right thing to do

Energy
Reduce fossil fuel use and carbon emissions through the planning and design of communities, sites, and buildings



ASDP Sustainability Targets

Energy Alternatives

Reduce fossil fuel use and carbon emissions through the planning and design of communities, sites, and buildings

District Solutions

- Create district partnerships to produce and/or sell renewable green power
 - MAC, MOA, and BCS are interested partners
 - Energy Task Force

Building Solutions

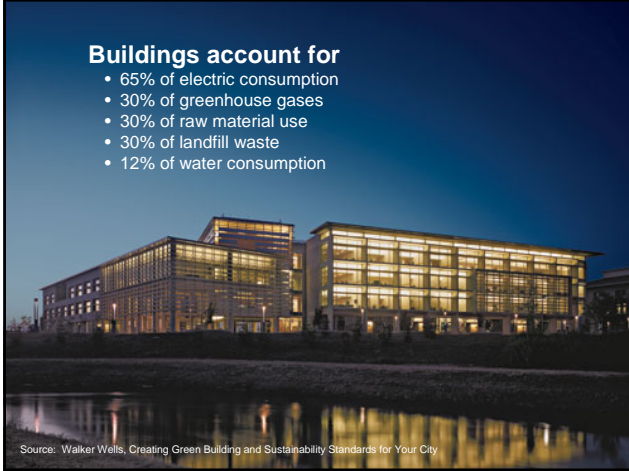
- Provide technical and financial assistance programs for business and property owners to implement energy efficient improvements
 - Energy code pilot project
 - Define efficiency improvements to existing buildings as eligible for TIF or abatement funding.

Utility Solutions

- Leverage utility initiatives that will reduce energy use district-wide
 - Conservation improvement programs
 - Replace incandescent bulbs with LED lamps
 - Smart grid

Buildings account for

- 65% of electric consumption
- 30% of greenhouse gases
- 30% of raw material use
- 30% of landfill waste
- 12% of water consumption



Source: Walker Wells, Creating Green Building and Sustainability Standards for Your City

Accessibility

Locate and design transportation systems to reduce reliance on the automobile and promote use of transit and alternative transportation modes



ASDP Sustainability Targets

Accessibility Solutions

Locate and design transportation systems to reduce reliance on the automobile and promote use of alternative transportation modes

Transit

- Improved service along American Boulevard and within the district
- Promote transit cohesive network

Design

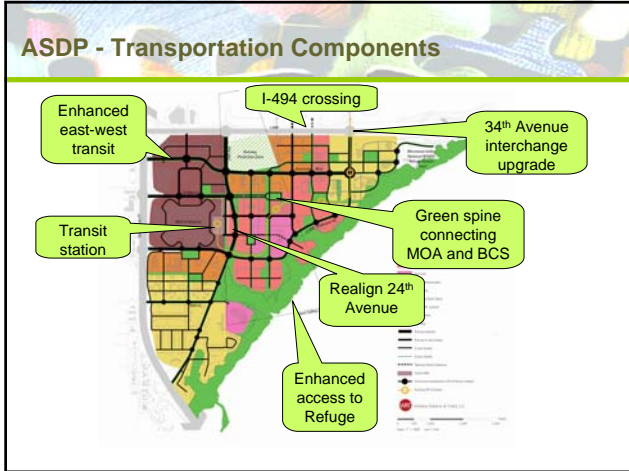
- Streets designed to accommodate pedestrians, bicyclists, and transit
- Fine grained street network to disperse traffic and encourage walking

Policy

- Decrease peak traffic and parking demand through transit use, carpooling, and flexible scheduling
- Shared district parking to reduce over supply of parking, reduce development costs, and promote more compact, walkable development

Roadway Network





ASDP Sustainability Targets

Design with Nature
Preserve, restore and enhance natural resources and integrate natural ecological systems in community planning and design

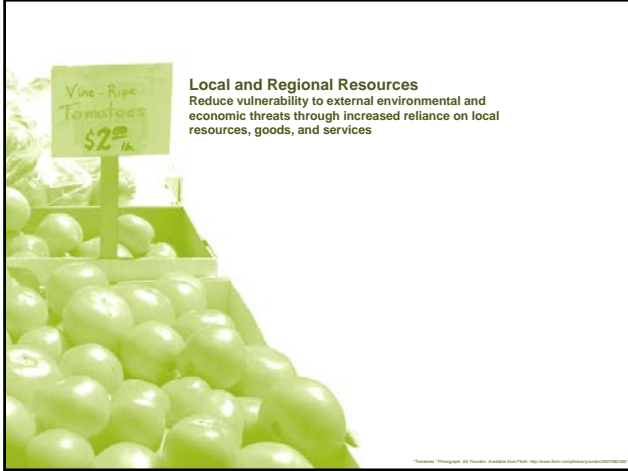
Stormwater Solutions

- Decrease stormwater run-off and contaminants to pre-developed condition
 - Vegetated filters and buffers
 - Wetland management, restoration and creation
 - Green building elements (e.g. green roofs, green walls, cisterns)
 - Rain gardens
- Below surface storage
- Increase infiltration
 - Increase open space acreage
 - Pervious asphalt and concrete

Landscape Solutions

- Enhance plant communities
 - Low-maintenance, salt tolerant, native, or naturalized species
 - Manage invasive species
 - Minimize disturbance of sensitive environments





Local and Regional Resources

Reduce vulnerability to external environmental and economic threats through increased reliance on local resources, goods, and services

ASDP Sustainability Targets

Local and Regional Resources
 Reduce vulnerability to external environmental and economic threats through increased reliance on local resources, goods, and services

- Encourage best waste management and recycling practices
- Integrate urban agriculture techniques
- Encourage resource conservation practices
- Encourage use of construction materials from the state and region



Social Sustainability

Provide housing, transportation, and employment opportunities for persons of all education and income levels

ASDP Sustainability Targets

Social Sustainability
 Provide housing, transportation, and employment opportunities for persons of all education and income levels

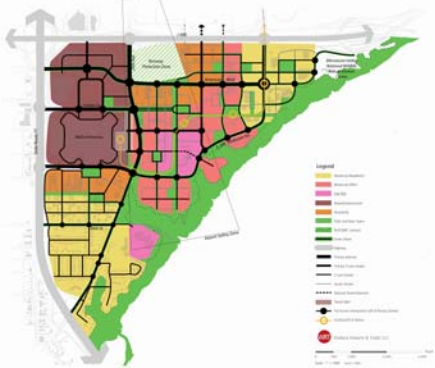
Transit

- Convenient transfers at multi-modal hub
- Enhanced transit access to major destinations

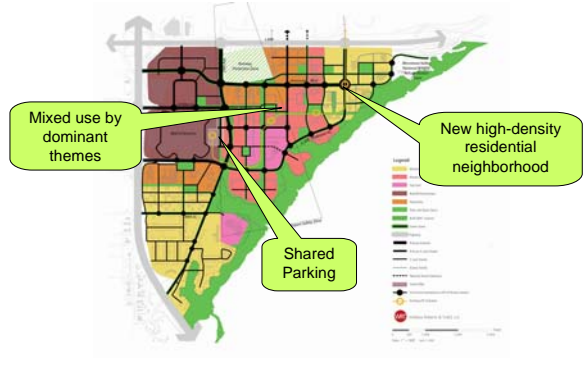
Incentive-Based Density Codes to:

- Encourage housing density and affordability close to transit
- Plan for the market potential necessary for service retail in proximity to housing and jobs
- Maximize development within ¼ - ½ mile of transit stations

Land Use



ASDP - Land Use Plan



Questions?

